



**20+**  
years of  
experience

# Product Catalog

**Discover**  
Sustainable Quality



Our company officials, who have been active in the precast concrete industry for many years, have brought their pre-stressed machinery and equipment, developed in line with user needs based on their accumulated knowledge, to the global market.

Our company provides services with its expert staff in areas such as innovation-focused production technologies, facility design and installation, crane track and rail laying, electrical and mechanical maintenance, and prestressing bed installation.

We act with the awareness that closely following technological developments is one of the most important values leading to success, adopting customer satisfaction and a reliable and dedicated service approach as our mission. In light of this vision, we aim to be one of the leading companies in the global market.

## QUALITY POLICY

YG Makina develops its products by testing and refining them through intensive R&D processes, adopting the principles of quality products, customer satisfaction, and continuous improvement as its corporate policy.

YG Makina maintains its competitive spirit while viewing team spirit and teamwork as indispensable elements. With its experience, it aims to bring together its high-quality and economical supply network with its business partners in the global market, primarily in Türkiye.

## PRODUCTION STANDARD

Our products are manufactured to high quality standards and are produced in compliance with the legal regulations regarding CE marking to ensure product safety in accordance with international standards throughout the design, production, and control processes.

### ■ Applicable Legislation

**2006/42/AT** - Machinery Safety Regulation

**2006/95/AT** - Regulations concerning electrical equipment designed for use within specified voltage limits

### ■ Standards Applied to Our Products

**TS EN ISO 12100:2010** - Machine Safety - General Principles for Design - Risk Assessment and Risk Reduction

**TS EN 60204- 1:2006** - Machine Safety - Electrical Equipment of Machines

Within this scope, the effects of the products we manufacture on users and the environment are monitored through control applications developed for this purpose. Product safety is ensured by conducting the necessary tests and controls. As part of the manufacturer's responsibility, we declare product safety by affixing the CE marking to our machines.

## OUR SERVICES

---

YG Makina provides a wide range of services in the installation, maintenance, and design of industrial facilities, delivering professional solutions to meet industry needs.

Our company offers reliable services in areas such as pre-tensioning bearing installation, crane maintenance and installation, facility installation, and general maintenance. In addition, it meticulously manages processes such as electrical and mechanical maintenance, crane track and rail installation with its expert staff.

YG Makina aims to provide its customers with long-lasting, durable solutions by prioritizing quality and safety at every step, from the design phase to implementation.

Pre-tensioning Bed Installation

Crane Maintenance and Installation

Facility Installation and Maintenance

Electrical and Mechanical Maintenance

Crane Track and Rail Laying

Facility Design





## WHAT IS PRE-TENSIONING AND WHERE IS IT USED?

---

Prestressing is a tensioning technique used in construction and engineering, typically applied to increase the strength of concrete. The prestressing process is carried out by tensioning steel cables or wires before concrete is poured, with the aim of balancing the loads on structural elements. This process makes the concrete more resistant to tensile stresses that may occur under load. In particular, since concrete has low tensile strength, prestressing significantly improves the performance and lifespan of concrete.

Prestressing is preferred mainly in the construction of bridge beams, parking structures, precast concrete elements, and large-span structures. It is also widely used in projects where durability and stability are important, such as floor slabs in large buildings, viaducts, water reservoirs, and pipelines. This technique allows concrete elements to be produced with thinner sections, thereby saving material while increasing the load-bearing capacity of the structure.

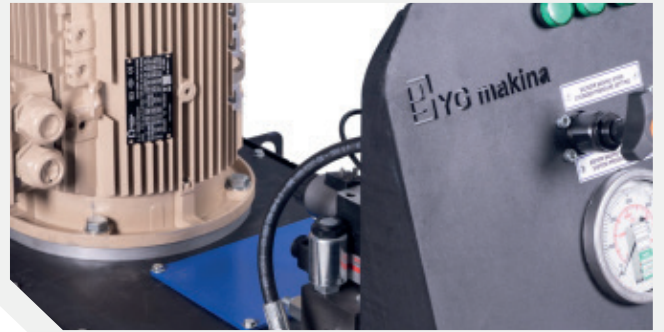
In summary, prestressing is an engineering method that makes structural elements more reliable and durable, offering a significant advantage in today's construction projects.





# HYDRAULIC PUMP UNIT

YGH - SPU



## Description

The Hydraulic Pump Unit is a pump machine that enables the release (reset) of the rope loads on the system by the discharge cylinders and simultaneously operates these cylinders. This unit is designed for effective use in hydraulic systems.

The primary function of the pump unit is to systematically release the tension in the ropes. This process utilizes hydraulic energy to effectively operate the release cylinders, ensuring the process proceeds in an orderly and safe manner. The Hydraulic Pump Unit is designed to deliver reliable and efficient performance in industrial applications.

## Technical Specifications

Product Code	YGH - SPU
Weight	250 kg
Maximum Capacity	450 bar
Engine Power	7.5 kw
Engine Speed	50 hz 1500 m/dak.

Tank Capacity	160 lt. (hd46)
Working Pressure	420 bar
Pump Flow Rate	10 lt. / dd
Control Voltage	24 vdc (wired)
Supply Voltage	380 V

# HYDRAULIC SINGLE UNIT

YGM - 2C



## Description

The Hydraulic Single Unit is designed as a hydraulic power unit and is a machine that can be used for both pre-tensioning jacks and cylinder discharge operations. Being electrically powered and remotely controlled provides the operator with a high degree of control and ease of use.

This unit, equipped with fully safe features, offers practicality to the user with its jack mounting bracket. Additionally, pressure settings are displayed on separate pressure gauges, providing the operator with detailed information regarding system control. The Hydraulic Single Unit is designed to deliver optimal performance in terms of reliability, efficiency, and safety for industrial applications.

## Technical Specifications

Product Code	YGM - 2C
Weight	450 kg
Maximum Capacity	420 bar
Engine Power	7.5 kw
Engine Speed	50 hz 1500 m/dak.

Tank Capacity	160 lt. (hd46)
Working Pressure	350 bar
Pump Flow Rate	10 lt. / dd
Control Voltage	24 vdc
Supply Voltage	380 V

# HYDRAULIC MULTI-UNIT

YGM - 2CK



## Description

The Hydraulic Multi-Unit is designed as a powerful hydraulic power unit, featuring a machine where pressure settings can be independently displayed on separate pressure gauges. This feature provides the operator with detailed control over the system. Additionally, its ability to use dual jacks offers flexibility for various applications.

Being electric and remote-controlled allows the user to ensure safe remote control. The Hydraulic Multi-Unit is designed to provide high performance, independent control, and suitability for various applications in industrial settings.

## Technical Specifications

Product Code	YGM - 2CK	Tank Capacity	160 lt. (hd46)
Weight	450 kg	Working Pressure	350 bar
Maximum Capacity	420 bar	Pump Flow Rate	10 lt. / dd
Engine Power	7.5 kw	Control Voltage	24 vdc
Engine Speed	1500 dd	Supply Voltage	380 V



# ROPE DRIVE MACHINE | TYPE - 1

YGM - HS - 1



## Description

The Rope Drive Type - 1 machine is a specialized piece of equipment used in the manufacture of prefabricated bridge girders, designed to quickly and efficiently place steel cables into the formwork before concrete is poured. This machine has the capability to pull 0.5-inch and 0.6-inch steel cables. Operated by a single person, this machine eliminates manual labor and time loss, making the process more efficient.

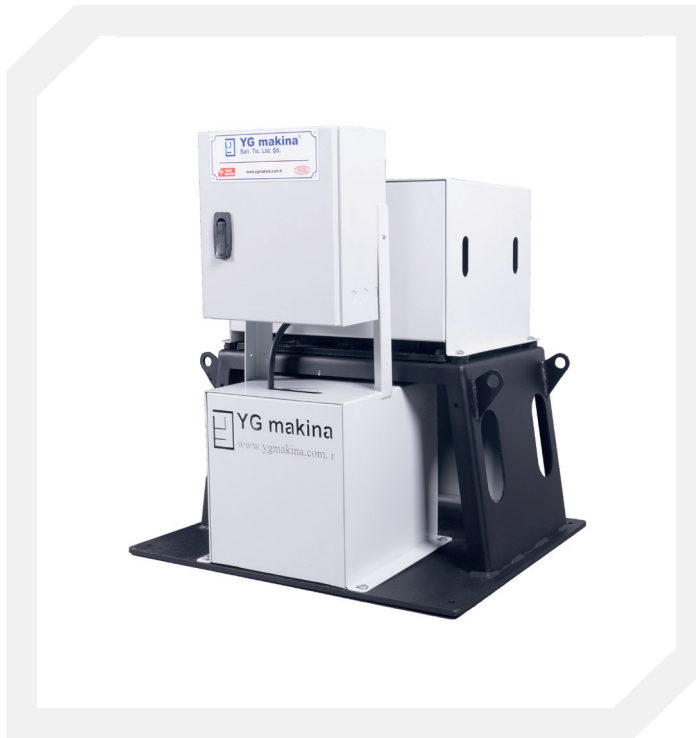
The machine operates at a frequency of 50 Hz and can be controlled remotely. This feature provides the operator with flexibility and greater control during the process. The rope pulling machine stands out with its ergonomic design, allowing the user to perform the process effortlessly and with ease. Thanks to these features, it is an ideal solution for optimizing steel rope placement processes in the manufacture of prefabricated bridge girders.

## Technical Specifications

Product Code	YGM - HS - 1
Weight	120 kg
Remote Control	100 mt.
Engine Power	2.2 kw

# DOUBLE PULLEY ROPE DRIVE MACHINE

YGM - HS - 3



## Description

The Double Pulley Rope Drive Machine is a specialized piece of equipment used in the production of prefabricated bridge girders. It is designed to quickly and efficiently place steel cables into the formwork before concrete is poured.

This machine has the ability to drive 0.5-inch and 0.6-inch steel cables.

This machine, which can be operated by a single person, makes the process more efficient by eliminating manual labor and time loss. Unlike the YGM – HS – 1, it features a dual roller system. This saves on labor and time.

## Technical Specifications

Product Code	YGM - HS - 3
Weight	140 kg
Remote Control	100 mt.
Engine Power	2.2 kw

## ROPE DRIVE MACHINE | TYPE - 2

YGM - HS - 2



### Description

The Rope Drive Machine Type-2 is specialized equipment developed to quickly and efficiently place steel ropes into the formwork before concrete pouring in the production of prefabricated bridge girders. It has the capacity to lay steel ropes with diameters of 0.5 and 0.6 inches and provides speed control in the 0-50 Hz range thanks to its inverter conversion system.

Remote control operation provides the operator with flexibility of movement and ease of use. Its powerful performance, capable of handling steel cables up to 200 meters, ensures effective use even at long distances. Its ergonomic design allows a single operator to work without fatigue, while optimizing the steel cable placement process to enhance efficiency in manufacturing operations.

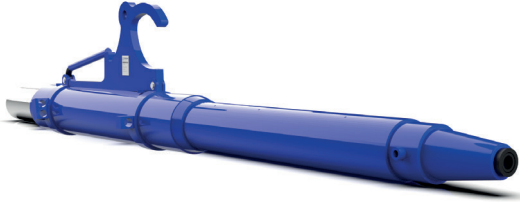
### Technical Specifications

Product Code	YGM - HS - 2
Weight	170 kg
Remote Control	200 mt.
Engine Power	5.5 kw - Geared



## TENSION JACK - 6 & 16 TON

YGM - K6T | YGM - K16T



### Description

The YGM-K6T and YGM-K16T models are ideal for smaller-scale jobs thanks to their compact design.

YGM-K16T model. With a pulling capacity of 16 tons, it offers the advantage of being able to work with 3/8, 7/16, and 0.6-inch ropes.

### Technical Specifications | YGM - K6T

Product Code	YGM - K6T
Stork	250 mm
Rope Type	3 x 3 mm
Effective Area	21.55 cm <sup>2</sup>
Maximum Capacity	281 bar
Mile Diameter	35 mm
Piston Diameter	63 mm

### Technical Specifications | YGM - K16T

Product Code	YGM - K16T
Stork	371 mm
Rope Type	3/8 - 7/16 - 1/2
Effective Area	51.05 cm <sup>2</sup>
Maximum Capacity	317 bar
Mile Diameter	40 mm
Piston Diameter	90 mm

# TENSIONING JACK

YGM - K25T



## Description

The Tensioning Jack is a YGM-K25 Stork model with a capacity of 25 tons, featuring a stroke length of 400 mm and a 3-effect structure. While performing tensioning and loosening operations in the first two stages, it reduces preload loss by pushing the core inside the cylinder when the pulling is completed in the third stage.

The replaceable gripping core provides flexibility to pull ropes of different diameters (0.5, 0.6). With a capacity of 25 tons, this jack delivers powerful performance and is ideal for reliably tensioning and releasing heavy-duty ropes, offering a wide range of applications.

## Technical Specifications

Product Code	YGM - K25T
Stork	400 mm
Weight	92 kg
Effective Area	75.40 cm <sup>2</sup>
Maximum Capacity	335 bar

Mile Diameter	50 mm
Piston Diameter	110 mm

## RELEASE CYLINDER

YGM - P S225MM



### Description

The Release Cylinder is a piece of equipment used to safely release the remaining force in ropes after the tensioning process. It is also known as a "relaxation cylinder." Once the rope tensioning process is complete, it controls the resulting force, reduces tension in the system, and ensures a safe working environment.

It contributes to the organization of operational processes by delivering reliable performance in industrial applications.

## FORMWORK REMOVAL KEY

YGM - KA



### Description

The Formwork Removal Key is an auxiliary tool featuring a two-way opening lever, enabling the quick and safe removal of concrete formwork.

It enhances operational efficiency by facilitating formwork removal processes and supports workplace safety.

Its durable construction ensures reliable performance in industrial applications.



## ROPE RELEASE TOOL

YGM - HSA



### Description

The Rope Release and Core Removal Tool is an auxiliary device designed to safely release ropes after tensioning and quickly remove the core from the system.

It facilitates operations by providing a secure and efficient transaction process.

Its durable construction ensures long-term and reliable performance in industrial applications.

## CLAMPS

YGM - KP



### Description

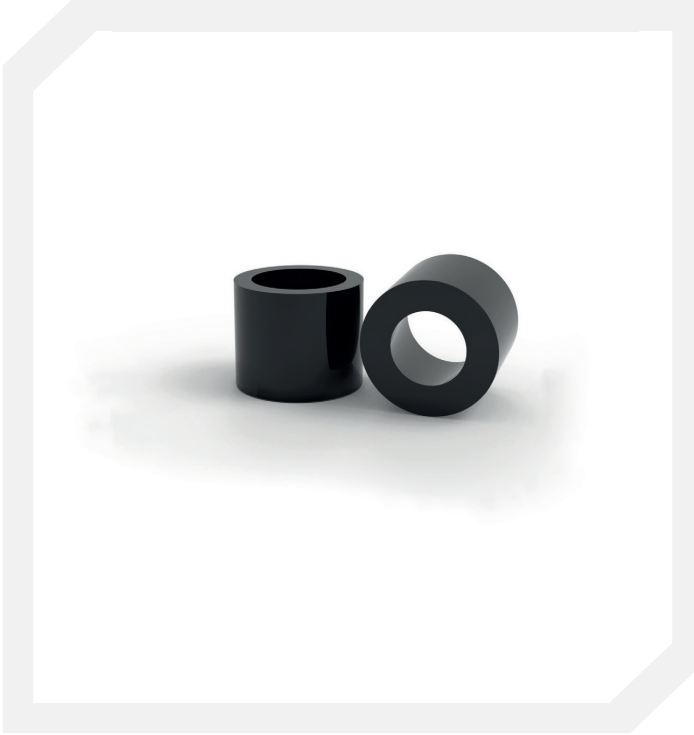
Clamps are important auxiliary elements that work together with the discharge cylinder to ensure that force is safely transferred to the clamps. They enhance the functionality of the discharge cylinder, enabling effective and safe force transfer.

Thanks to these features, it contributes to the controlled and smooth execution of processes in industrial applications and ensures safety, especially after tensioning operations.

Used in conjunction with the discharge cylinder. The discharge cylinder is also referred to as an auxiliary element.

## OPEN HIVE

YGM - AK



### Description

The Open Hive is an auxiliary device that holds the core and has a rope-holding feature. It is attached to the tensioning side to ensure the rope is securely fastened with its core.

It supports tensioning processes by providing a reliable grip in industrial applications and contributes to the smooth execution of processes.

## CLOSED HIVE

YGM - KK



### Description

The Closed Hive is an element that contains a core and has a spring-loaded rope-holding feature. It is manufactured from a special alloy steel material with high durability.

It provides stability during tensioning operations by ensuring the rope is held securely, contributing to the safe completion of the operations.

Their use minimizes tension loss during pre-tensioning and provides a reliable grip in industrial applications.

## SPLICE SWIVEL

YGM - EK



### Description

The Splice Swivel is a strong intermediate connection element used to connect two ropes together. It provides a strong connection between ropes, contributing to the safe transfer of tension loads. It is also used to connect ropes of different diameters.

It delivers reliable performance in industrial applications where high voltages are involved.

## CRANE PINS

YGM - KVC



### Description

Crane Pins, also known as jaws, are a vital part of crane machinery. These pins are mechanisms that ensure ropes are securely fastened.

Also known as rope gripping cores, these components help to securely grip ropes and safely transfer tension loads.



## CORE

YGM - CKR



### Description

The cores located in the open-closed housing and intermediate drawbar effectively grip the ropes, ensuring they are securely fastened and providing rope-holding properties.

These components play an important role in industrial applications by increasing the durability and safety of structures.

## ANCHOR PLATE

YGM - ANKP



### Description

An anchor plate is a support component typically used in concrete structures or applications requiring tensile force. This plate, which can also be manufactured in custom sizes upon request, is used to secure steel cables, tension wires, or rods and to safely transfer the generated tensile force to the structure.

Anchoring plates increase the strength and safety of the structure by distributing stress over a wide surface area and prevent stressed elements from slipping or coming loose.

## PERFORATED TENSION PLATE

YGM - GP



### Description

Perforated tensioning plates are used for special tensioning operations. These plates, which can be produced in custom sizes upon request, are positioned directly at the front of the molds and secured in place.

To maximize security, these plates are manufactured from specially alloyed steel with high durability.

## CORE EXTRACTION TOOL

YGM - CSA



### Description

Pre-stressed steel cables are used to separate the sheaths and intermediate connectors (spacers).

This part consists of a main body and an additional part. The apparatus is securely positioned and fixed, then separated from the rope clamps using a hammer or manual force.

It is important that the surfaces of the combs and cores are cleaned and treated with a separating agent for a smooth extraction process.

## HIVE CLEANING BRUSH

YGM - KTF



### Description

It ensures a longer service life for the jaws and the barrel by cleaning the dirt that accumulates between the core and the barrel during use.

It also prevents the jaw from getting stuck inside the housing.

## CORE CLEANING BRUSH

YGM - CTF



### Description

By cleaning the dirt that accumulates inside the core during use, it ensures that the core lasts longer and prevents the core from getting stuck inside the hive.

## YG Makina;

It ranks among the leading companies in its sector with the services it provides, and has the capacity to meet demands in the shortest possible time with its strong inventory and professional team.



International  
Organization for  
Standardization



Deutsche  
Akkreditierungsstelle

**ISO**  
**9001**

**ISO**  
**10002**



**100%**  
*Customer  
Satisfaction*





## OUR REFERENCES

 <b>ALACALI</b>	 <b>AHTER®</b> ITHALAT İHRACAT TİC. LTD. ŞTİ.	 <b>AGS</b> Ard Germe Sistemleri	 <b>ka.yapi®</b> prekast	 <b>AR GE</b> PREFABRİK	 <b>AVIBRO®</b> ELEKTRİK MOTORLARI A.Ş.	 <b>LOGOBETON</b> prefabrik inşaat	 <b>Limak</b>	<b>ACT BETON</b>
 <b>betoya</b> PREFABRİK	 <b>LFA</b> PREFABRİK	 <b>AYDOĞANLAR</b> İNŞAAT	 <b>albayrak</b> inşaat	 <b>ABAS</b> PREFABRİK	 <b>ADİL</b> prefabrik	 <b>MAHİR</b> PREFABRİK	<b>MEGA POWER</b>	 <b>betofabrik®</b>
<b>BİLGİNOĞLU MADENCİLİK</b>	 <b>BATİPREFABRİK</b>	<b>BETAS</b>	 <b>beltaş</b> YAPI ELEMANLARI	<b>MAKYOL</b>	<b>NOVIN SIMIA</b>	<b>BETONSA</b>	<b>BEST BETON</b>	<b>BİLTON PREFABRİK</b>
<b>ONESTEEL</b>	 <b>OZE</b> GRUP	 <b>CENGİZ</b> İNŞAAT	 <b>CEMRE</b>	 <b>CANOĞLU</b>	 <b>CANBOLAT</b> MAKİNA	 <b>ÖZDOĞU</b> SARP	<b>ÖZGÜNİNŞAAT</b> TÜRKİYE İNŞAAT VE YATIRIM MENKUL DEĞERLER A.Ş.	 <b>CALLIOĞLU</b>
<b>DEMÇER YAPI</b>	<b>DERE GRUP</b>	<b>DİNARİK ARDGERME</b>	 <b>DAGYAPI</b> PREFABRİK	<b>danta prefabrik</b>	 <b>PRENAS</b> PREFABRİK	<b>Polatyo!</b>	<b>DUYGU İNŞAAT</b>	<b>DSF İNŞAAT</b>
 <b>deneyim</b> mühendislik ve inşaat	<b>DALGIÇ PREFABRİK</b>	 <b>DENİZLİ</b> PREFABRİK	 <b>ERCAG</b> Crane Systems	<b>SPC</b>	 <b>SAYIN</b>	<b>ENKA</b> Engineering for a Better Future	 <b>ERGI</b> PREFABRİK İNŞAAT LTD. ŞTİ.	
 <b>ELF</b> BETON PREFABRİK	 <b>EMS</b> Yapı Elemanları	 <b>tork</b> BETON PREFABRİK	 <b>TEKNİK</b> PREFABRİK BETON YAP	 <b>EMEK</b> PREFABRİK YAPI ELEMANLARI SANAYİ	 <b>ER PREFABRİK</b>	 <b>ELİT</b> PREFABRİK	 <b>ES-PEKER</b>	
 <b>FERSAY</b> PREFABRİK	 <b>Yeditepe</b> PREFABRİK	 <b>proev</b>	 <b>FORAKS</b> PREFABRİK	 <b>gürbağ</b> İNŞAAT	 <b>Has PREFABRİK</b>	<b>HABAY</b>	 <b>İLER A.Ş.</b>	
 <b>77İNŞAAT</b>	 <b>iGA</b>	 <b>İL-SA</b> PREFABRİK YAPI ELEMANLARI	 <b>KALESAN</b>	 <b>KAHVECİOĞLU GRUP</b> YAPI ELEMANLARI VE İNŞAAT	<b>MEKA</b>	 <b>MAU</b>	 <b>KOLN</b>	
<b>KAPPA</b>	 <b>KALMAK</b>	 <b>KASTAŞ</b>	<b>OKTAŞ</b>	 <b>ONUR GRUP</b> ANONİM ŞİRKETİ	 <b>KURULAR İNŞAAT</b> İNŞAAT VE YATIRIM MENKUL DEĞERLER A.Ş.	 <b>KALE</b> prefabrik	 <b>KIRIK</b> İNŞAAT VE YATIRIM	
 <b>LEGOYAP</b>	 <b>SysGroup</b>	 <b>SERYAPI</b> seryapicimlik ve inşaat ve yatırım menkul değerler a.ş.	<b>MR BOYA</b>	<b>MELEKOĞLU PREFABRİK</b>	<b>REHA PREFABRİK</b>	<b>SAĞLAMTAŞ PREFABRİK</b>	<b>NET PREFABRİK</b>	
 <b>OZ KARAKUŞ İNŞAAT</b>	 <b>YENİ</b> PREFABRİK	 <b>MERTA</b> inşaat ve yatırım	 <b>MİLİMETRİK</b>	 <b>seza İnşaat</b> İNŞ. VE TİC. A.Ş.	 <b>SERKOC</b> SERKOC PREFABRİK SANAYİ VE TİC. A.Ş.	 <b>PB PREFABRİK</b>	 <b>PREKAST BETON</b> Sanayi ve Ticaret A.Ş.	<b>MAVİTAS PREFABRİK A.Ş.</b>
<b>NEBİOĞLU MADENCİLİK</b>	<b>NİVAK</b>	 <b>teknik beton</b>	<b>TEPEYOL İNŞAAT</b>	 <b>SİMAL İNŞAAT</b>	 <b>sebil</b>	<b>MKC ADİ ORTAKLIĞI</b>	 <b>YK YAFİA</b> İNŞAAT	
 <b>YARDIMCI</b> prefabrik	 <b>TINKIR</b> BETON PREFABRİK İNŞAAT VE YATIRIM MENKUL DEĞERLER A.Ş.	 <b>TASARIM ÇELİK</b> İNŞAAT VE YATIRIM MENKUL DEĞERLER A.Ş.	<b>limni safety</b>	 <b>ACEM</b>	 <b>acemBETON</b>	 <b>AKAT</b> PREFABRİK İNŞ. SAN. TİC. A.Ş.	 <b>ERGÜNLER</b>	
 <b>BG GRUP</b>	<b>bien</b>	 <b>BURSA</b> PREFABRİK KİRALAMA VE SATIŞ	<b>BEKONDER</b>	 <b>MAST</b>	<b>DURABLE</b>	 <b>GG</b> GENTAŞ GROUP	 <b>KARESİ</b>	
 <b>MUKA</b>	<b>OKAGROUP</b>	 <b>PYE</b> PREFABRİK YAPI ELEMANLARI İNŞAAT VE SANAYİ A.Ş.	 <b>sare</b> GLOBAL High Quality Turkish Brand	 <b>som</b>	 <b>TALASLILAR</b> PREFABRİK	<b>UKKA GRUP</b>	 <b>viğit efe</b> İnşaat ve Sanayi A.Ş.	<b>bitik</b>

YG Makina,  
provides services to more  
than 15 countries.

